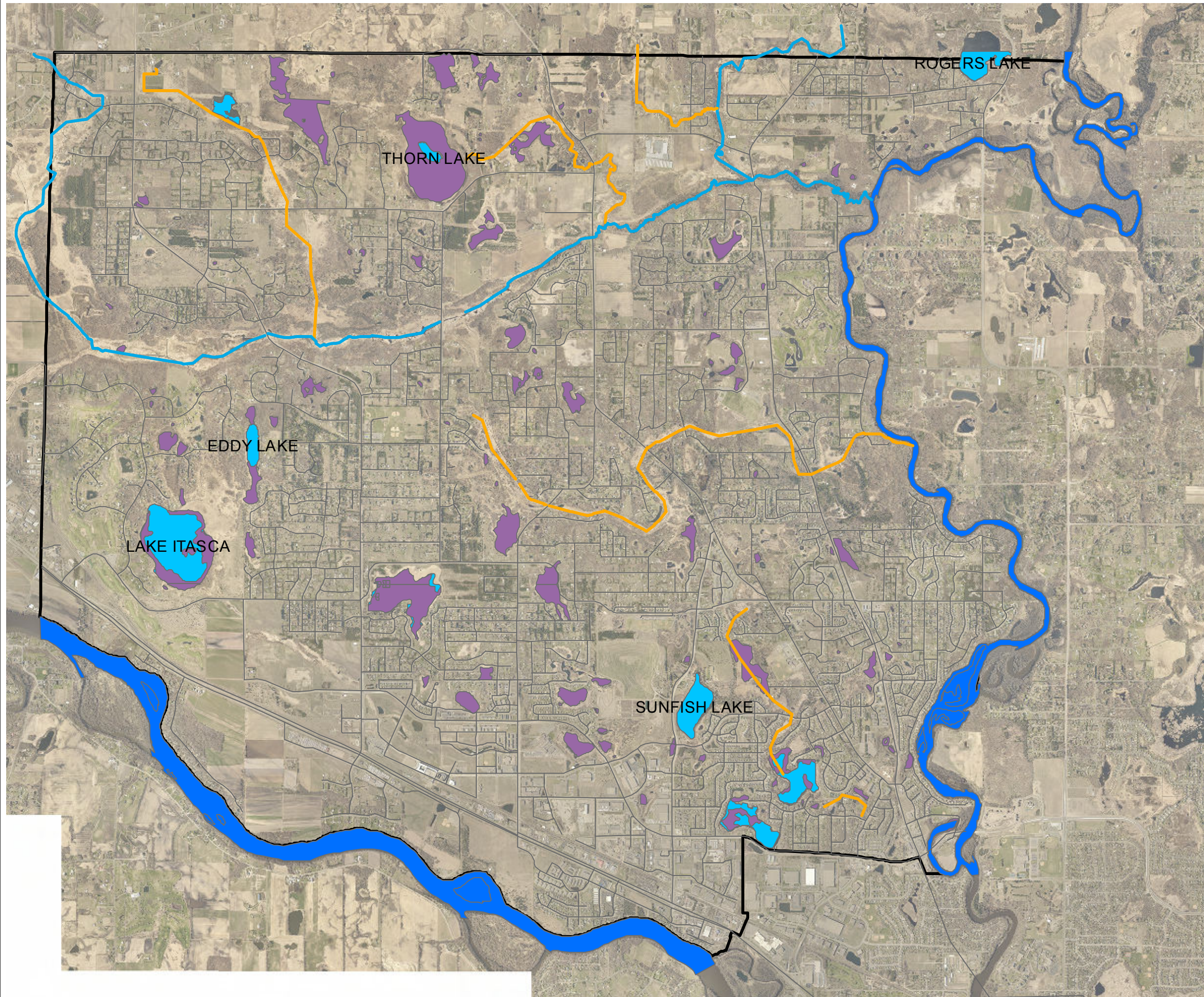




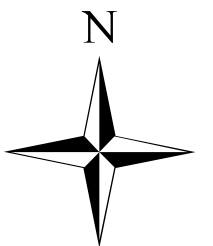
PUBLIC WATERS INVENTORY MAP WITH PUBLIC DITCHES (MS 103E)

FIGURE NO. 5A
OCTOBER, 2015



Legend

- County Ditches
- Brooks
- Rivers
- NWI_CODE
 - Protected Waters
 - Lakes and Ponds



0 2,000 4,000 8,000 Feet