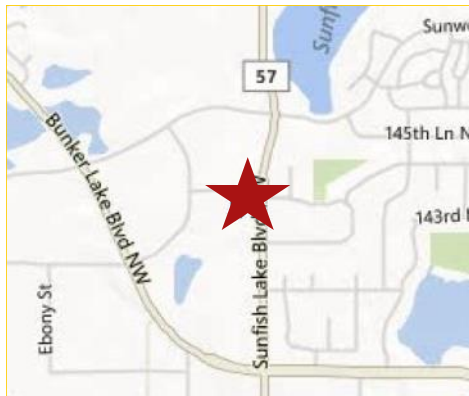


1,260SF Finished Shop Space for LEASE



**14300 Sunfish Lk Blvd
Ramsey, MN**

**1,260 SF Available, Some Automotive use
Ok, Outdoor Storage Possible**



- Private entrance
- Restroom shared w/unit D
- Secure, fenced yard
- Two 12ft overhead garage doors
- Heated shop space
- 14ft Ceilings



Suite C — \$2,500/Mo

Providing Exceptional Personal Service



Delivering Exceptional Positive Results

**ROCK SOLID Companies
is Your FULL SERVICE Real Estate Brokerage**



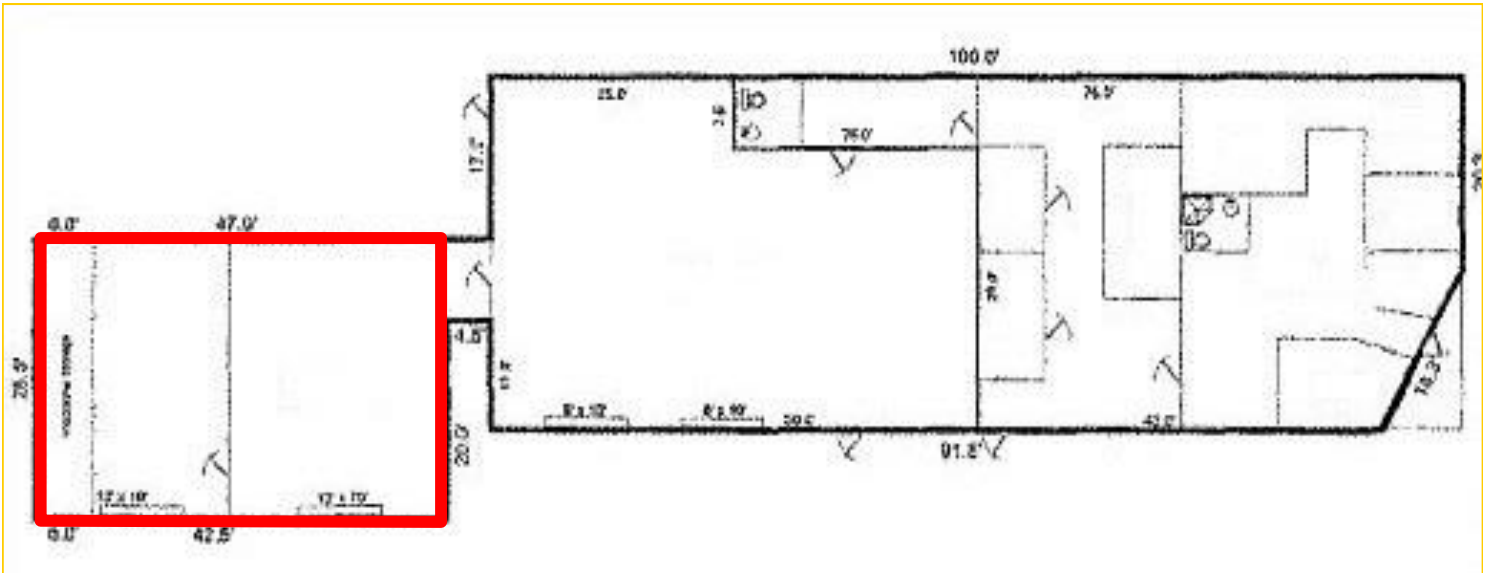
Commercial, Property Management, Troubled Assets, Court Receivership,
Investment/Equity, 1031 Exchange, Residential, Property Development
and Vacation/Coastal Properties. Licensed in Minnesota & Florida

www.rocksolidcos.com

Ron Touchette Broker
612.435.7777
ron@rocksolidcos.com



1,260SF Finished Shop Space for LEASE



Providing Exceptional Personal Service



Delivering Exceptional Positive Results

ROCK SOLID Companies
is Your FULL SERVICE Real Estate Brokerage



Commercial, Property Management, Troubled Assets, Court Receivership,
Investment/Equity, 1031 Exchange, Residential, Property Development
and Vacation/Coastal Properties. Licensed in Minnesota & Florida

www.rocksolidcos.com

Ron Touchette Broker
612.435.7777
ron@rocksolidcos.com



1,260SF Finished Shop Space for LEASE

**14300 Sunfish Lk Blvd
Ramsey, MN**

Area Demographics

Community-at-a-Glance

County Seat: **Anoka**

3 Mile Radius

Population:

35,544

Median Age:

35.2

Average Family Size:

3.15

Median Home Value:

\$184,442

Median Household Income:

\$72,547

Commute Time (minutes):

28.0

**2010 US Census Data & Esri Forecasts*

The information herein was obtained from sources deemed to be reliable. The information includes projections, assumptions and estimates as examples only and of a forecast nature yet may not represent actual, current or future performance. We make no guarantees or warranties. It is submitted subject to the possibility of withdrawal without notice, errors, change of price, omissions, financing, rental or other conditions. You and your tax and legal advisors should conduct your own investigation of the property and contemplated or proposed transaction.

Last Updated: Friday, July 21, 2017

General Characteristics	1 Mile	3 Mile	5 Mile
Total population	3,775	35,544	82,943
<i>Male</i>	1,914	17,790	41,458
<i>Female</i>	1,861	17,754	41,484
Median age (years)	36.2	35.2	36.8
<i>Under 5 years</i>	251	2,581	5,449
<i>18 years and over</i>	2,757	26,210	61,436
<i>65 years and over</i>	318	3,389	7,664
Average household size	2.74	2.64	2.70
Average family size	3.10	3.15	3.14
Total housing units	1,452	13,927	31,673
Social Characteristics	1 Mile	3 Mile	5 Mile
Pop. 25+ by Educational Attainment	1,791	22,183	54,126
<i>HS graduate</i>	24.1%	29.4%	28.3%
<i>Associate degree</i>	13.9%	12.3%	13.1%
<i>Bachelor's degree</i>	22.0%	17.2%	19.7%
Family Households	1,057	9,149	22,202
Economic characteristics	1 Mile	3 Mile	5 Mile
16+ In labor force	1,463	17,311	43,961
Average travel time to work (minutes)	30.8	28.0	27.8
Median household income (dollars)	81,688	72,547	80,932
Average household Income (dollars)	96,520	83,213	91,242
Per capita income (dollars)	33,276	31,060	32,687
Housing Characteristics	1 Mile	3 Mile	5 Mile
Owner-occupied homes	1,193	9,443	24,146
<i>Median value (dollars)</i>	201,004	184,442	185,203
Renter-occupied homes	185	3,814	6,265

Providing Exceptional Personal Service



Delivering Exceptional Positive Results

ROCK SOLID Companies

is Your FULL SERVICE Real Estate Brokerage



Commercial, Property Management, Troubled Assets, Court Receivership, Investment/Equity, 1031 Exchange, Residential, Property Development and Vacation/Coastal Properties. Licensed in Minnesota & Florida

www.rocksolidcos.com

Ron Touchette Broker
612.435.7777
ron@rocksolidcos.com

