

FOR LEASE

14001 St. Francis Blvd Ramsey, MN



PROPERTY FEATURES

- Total building size 24,780 square feet
- Vibrant center on busy intersection
 - Suite 14063 – 1,566 sq ft available – wide open bay
 - Suite 14007 – 3,848 sq ft available – former fitness studio with all buildouts in place
- Excellent signage & visibility to Hwy 47 & Bunker Lake Blvd.
- Signalized intersection; 21,500 vehicles per day (MNDOT 2011)
- Parking ratio: 6.6/1000

LEASE RATE: \$14.00/sq ft NNN CAM/Tax: \$7.72 (Est. 2017)

For More Information Contact: MARTY FISHER
PREMIER COMMERCIAL PROPERTIES, LLC
6897 139th Lane NW Ramsey, MN 55303
763.862.2005

www.premiercommercialproperties.com



FOR LEASE

14001 St. Francis Blvd Ramsey, MN



Suite 14063 – 1,566 rsf
In-line space, good visibility to St. Francis Blvd

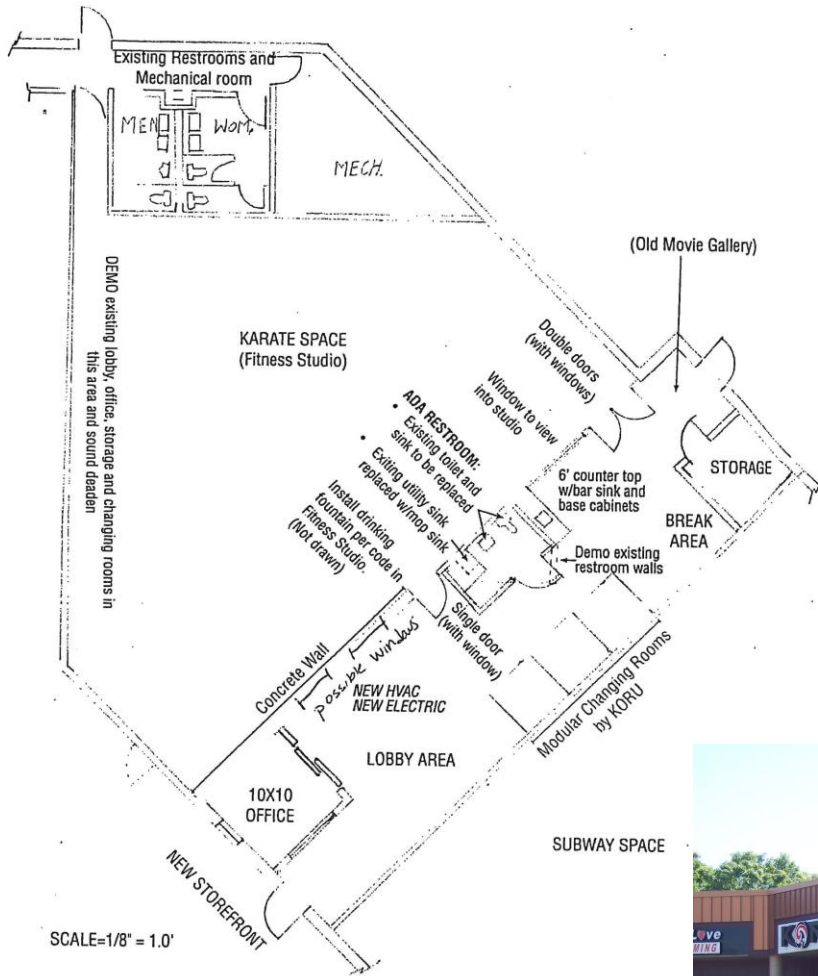
For More Information Contact: MARTY FISHER
PREMIER COMMERCIAL PROPERTIES, LLC
6897 139th Lane NW Ramsey, MN 55303
763.862.2005

www.premiercommercialproperties.com



FOR LEASE

14001 St. Francis Blvd Ramsey, MN



Suite 14007 – 3,848sf
Former fitness space

For More Information Contact: MARTY FISHER
PREMIER COMMERCIAL PROPERTIES, LLC
6897 139th Lane NW Ramsey, MN 55303
763.862.2005
www.premiercommercialproperties.com



FOR LEASE

14001 St. Francis Blvd Ramsey, MN

DEMOGRAPHICS (2012)

	<u>1 mile</u>	<u>3 miles</u>	<u>5 miles</u>
Total Population	6,488	53,034	118,551
Total Households	2,558	20,045	43,130
Total Families	1,570	13,814	31,518
Average Household Income	\$61,654	\$76,148	\$82,032



For More Information Contact: MARTY FISHER
PREMIER COMMERCIAL PROPERTIES, LLC
6897 139th Lane NW Ramsey, MN 55303
763.862.2005
www.premiercommercialproperties.com

