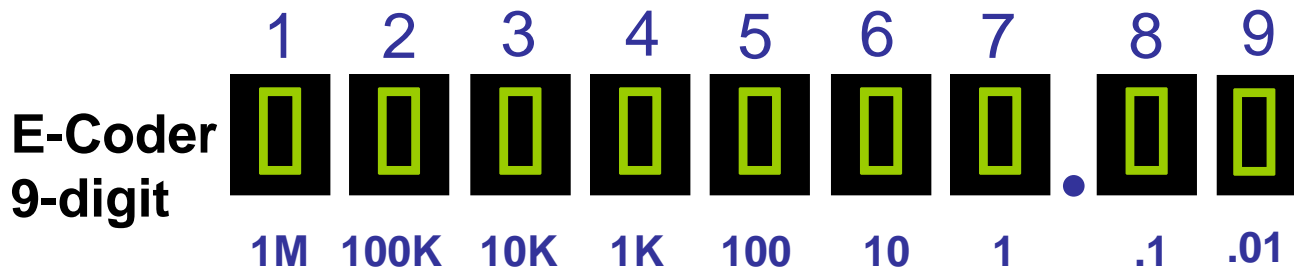
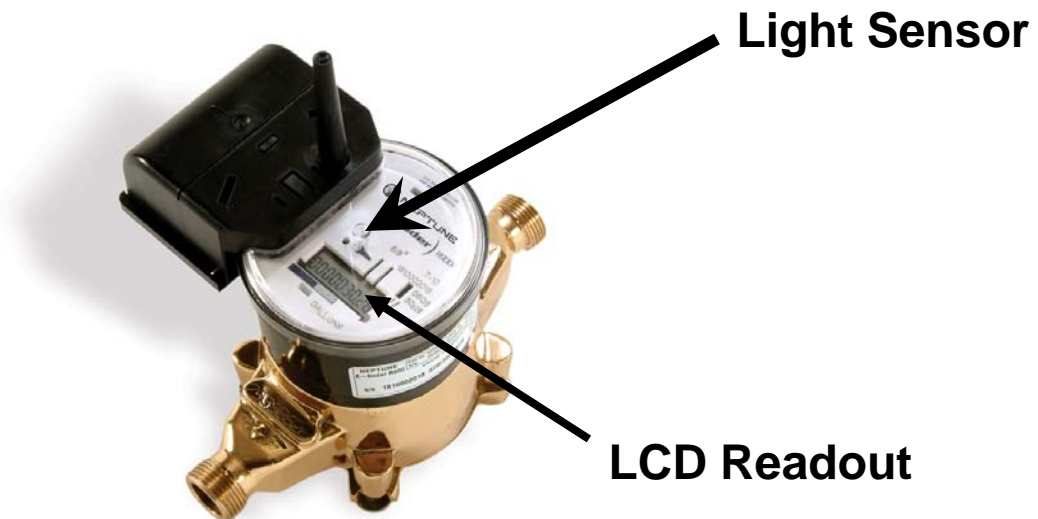


- Shining a light on the sensor will activate the LCD readout
- The readout will display a flashing faucet icon representing an intermittent leak. A full time faucet represents a full-time leak
- The LCD shows a meter reading and six seconds later the display switches to rate-of-flow.

➤ There is an arrow showing the direction of flow



5/8", 3/4", 1" T-10, GALLONS