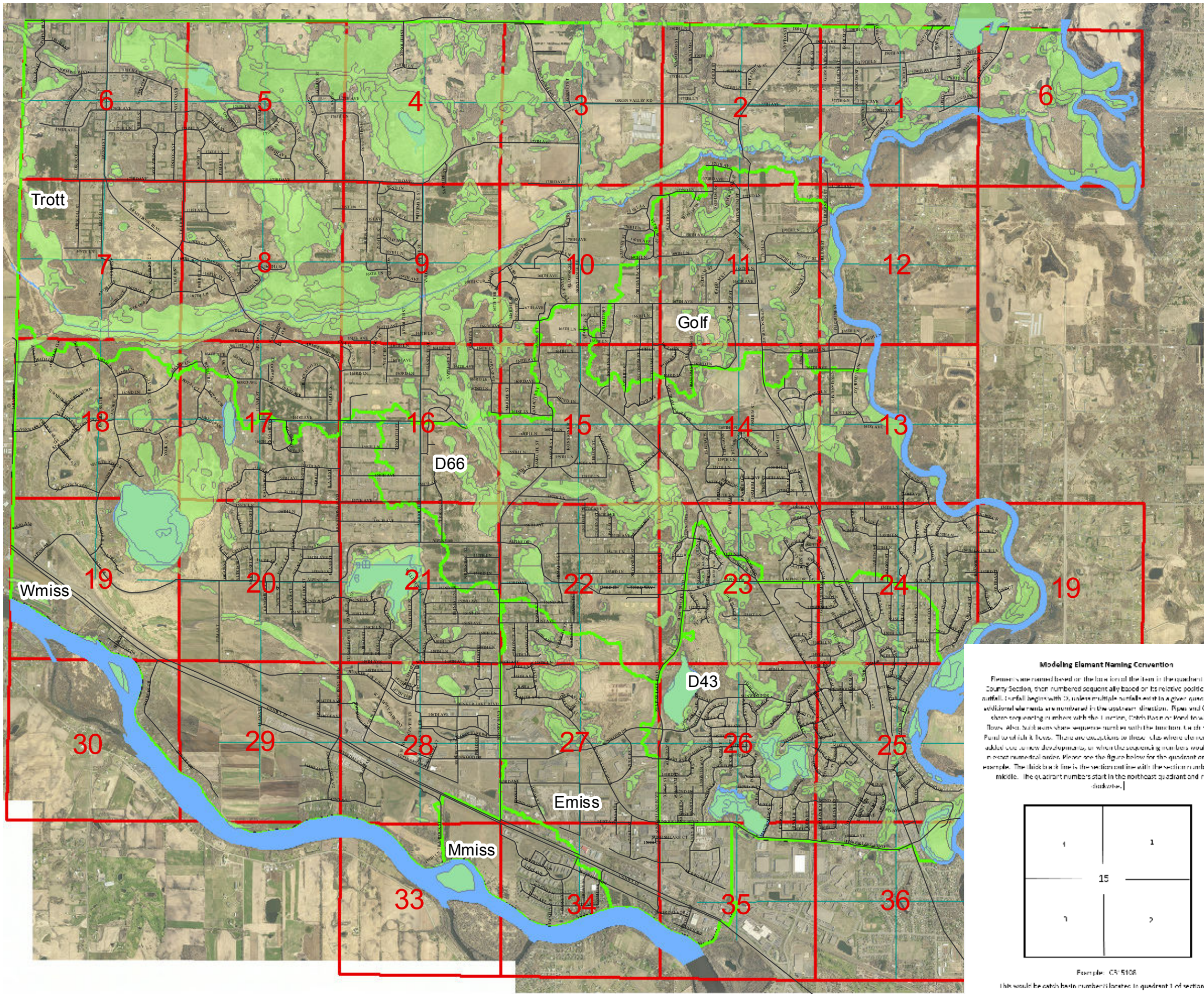


COUNTY SECTION NUMBERING AND MODELING ELEMENT NAMING CONVENTION

FIGURE NO. 9
OCTOBER, 2015

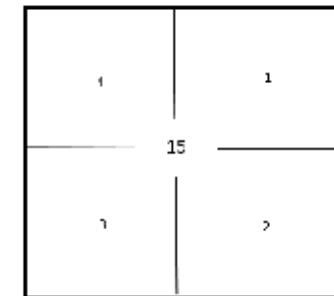


Legend

- Streets
- NWI
- Creeks
- Rivers
- Lakes, Ponds
- Watersheds
- Section_only
- Section_qtr
- City Limits

Modeling Element Naming Convention

Elements are named based on the location of the item in the quadrant of the County Section, then numbered sequentially based on its relative position to the outfall. The fall begins with 0, unless multiple outfalls exist in a given quadrant, and additional elements are numbered in the upstream direction. Pipes and Channels share sequencing numbers with the 1 meter, 5 meter, 10 meter, or 20 meter flow. Also, shallows share sequence numbers with the 1 meter, 5 meter, 10 meter, or 20 meter flow. There are exceptions to these rules where elements were added to existing developments, or when the sequencing numbers couldn't fall in exact numerical order. Please see the figure below for the quadrant order and example. The thick black line is the section outline with the section number in the middle. The quadrant numbers start in the northeast quadrant and move clockwise.



Example: CS 5108

This would be catch basin number 1 located in quadrant 1 of section 15.

